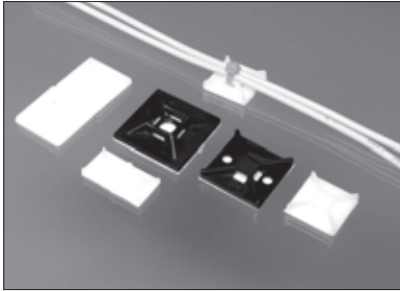


MOUNT

● MOUNT BASE



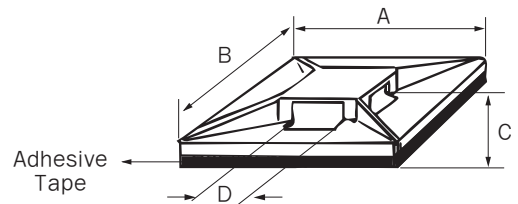
PART NO.	A	B	C	D	Method	Tensile (kg)
DAMB-05	12.7	12.7	3.6	2.8	(Adhesive)	12.0kg
DAMB-10	19.2	19.2	3.8	4.3	(Adhesive)	12.0kg
DAMB-20	25.0	25.0	4.0	5.0	(Adhesive)	23.0kg
DAMB-30	29.8	29.8	6.4	6.4	(Adhesive)	23.0kg
DAMB-101	21.2	21.2	4.0	4.1	(Adhesive)	12.0kg
DAMB-201	27.5	27.5	5.7	5.6	(Adhesive)	23.0kg

This versatile mount will support a maximum weight of 50 lb.(22.7kg) Where necessary for increased support, two holes are provided to accommodate #6 screws.

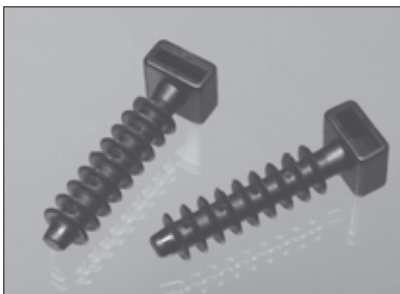
Material : NYLON 66. or ABS.

Color : Natural or Black

Recommended installation temperature : 21°C



● MASONRY MOUNT



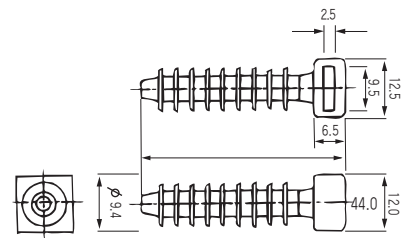
Notes ;

1. Material : Nylon

2. Color : Black

3. Ideal for both indoor & outdoor applications. Permanent method of attaching wires & cable to masonry surface. Masonry mount(MMB-1) simply taps into 8mm drilled hole. It accepts DACT-80 through DAMCT-530 series cable ties.

Part No.
MMB-1

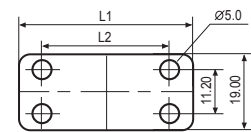


● MARKER PLATES



Dong-A Marker Plates can be marked with an oil pens or in a Marking machine.

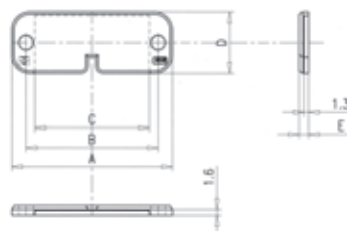
They can be used with Dong-A Cable Ties DACT Type up to 4.8mm widths and mounted in any vertical or horizontal directions as flags, tags or wrap-around identification plates.



• Material : PVC • Color : Beige

PART NO.	DAMP-26	DAMP-32	DAMP-38	DAMP-51	DAMP-77
L1	38.0	44.5	50.8	63.5	89.0
L2	26.0	32.5	38.8	51.5	77.0

● NAME PLATE COVER



• Material : PS • Color : Transparent

	A	B	C	D	E
DANPC-1532	45	37	32.1	17	2.7
DANPC-2045	60	51	45.6	22	3