

## Potentiometers for Panel Mounting

### Series 8455



- > For panel mounting
- > Versions with
  - connection lead
  - connection terminals
- > Resistance range from 100 Ω ... 4.2 MΩ
- > Power 2 W

www.stahl.de



10029E00



E4

The analogue user interface of the potentiometers Series 8455 allow simple adjustment of the nominal value. The devices are available with a connection lead or with connection terminals.

Zone	ATEX / IECEx					
	0	1	2	20	21	22
8455/2: For use in		x	x		x	x
8455/4: For use in		x	x			

WebCode 8455A

# Potentiometers for Panel Mounting

## Series 8455

Selection Table

Version	Resistance values	with connection lead, 6 m	with terminals	Weight kg
		Order number	Order number	
Potentiometer	100 Ω	8455/2-100Ohm-.-6	8455/4-100Ohm-.	0.600
	220 Ω	8455/2-220Ohm-.-6	8455/4-220Ohm-.	0.600
	470 Ω	8455/2-470Ohm-.-6	8455/4-470Ohm-.	0.600
	1 kΩ	8455/2-1kOhm-.-6	8455/4-1kOhm-.	0.600
	2.2 kΩ	8455/2-2,2kOhm-.-6	8455/4-2,2kOhm-.	0.600
	4.7 kΩ	8455/2-4,7kOhm-.-6	8455/4-4,7kOhm-.	0.600
	10 kΩ	8455/2-10kOhm-.-6	8455/4-10kOhm-.	0.600
	22 kΩ	8455/2-22kOhm-.-6	8455/4-22kOhm-.	0.600
	47 kΩ	8455/2-47kOhm-.-6	8455/4-47kOhm-.	0.600
	100 kΩ	8455/2-100kOhm-.-6	8455/4-100kOhm-.	0.600
	220 kΩ	8455/2-220kOhm-.-6	8455/4-220kOhm-.	0.600
	470 kΩ	8455/2-470kOhm-.-6	8455/4-470kOhm-.	0.600
	1 MΩ	8455/2-1MOhm-.-6	8455/4-1MOhm-.	0.600
	4.7 MΩ	8455/2-4,7MOhm-.-6	8455/4-4,7MOhm-.	0.600

### Order Number Supplement

Actuator with scale*:	0 ... 6	8455/2-...Ohm-0/6-6	8455/4-...Ohm-0/6
	0 ... 10	8455/2-...Ohm-0/10-6	8455/4-...Ohm-0/10
	0 ... 100	8455/2-...Ohm-0/100-6	8455/4-...Ohm-0/100
* Further scales on request			

Note further cable lengths on request

### Explosion Protection

#### Marking

Version	8455/2 with 6 m connecting cable	8455/4 with terminals
IECEX		
Gas explosion protection	Ex dm IIC T6 (Ta = - 20 ... + 40 °C) Ex dm IIC T5 (Ta = - 20 ... + 55 °C)	Ex dem IIC T6 (Ta = - 20 ... + 40 °C) Ex dem IIC T5 (Ta = - 20 ... + 55 °C)
Dust explosion protection	Ex tD A21 IP65 T95°C (Ta = - 20 ... + 55 °C) Ex tD A21 IP65 T80°C (Ta = - 20 ... + 40 °C)	
Europe (ATEX)		
Gas explosion protection	⊕ II 2 G Ex d mb IIC T6 (Ta = - 20 ... + 40 °C) ⊕ II 2 G Ex d mb IIC T5 (Ta = - 20 ... + 55 °C)	⊕ II 2 G Ex de mb IIC T6 (Ta = - 20 ... + 40 °C) ⊕ II 2 G Ex de mb IIC T5 (Ta = - 20 ... + 55 °C)
Dust explosion protection	⊕ II 2 D Ex tD A21 IP65 T80°C (Ta = - 20 ... + 40 °C) ⊕ II 2 D Ex tD A21 IP65 T95°C (Ta = - 20 ... + 55 °C)	

#### Certificates

Version	8455/2 with 6 m connecting cable	8455/4 with terminals
IECEX	IECEX PTB 07.0002 X	IECEX PTB 07.0001 U
Europe (ATEX)	PTB 02 ATEX 2156 X	PTB 02 ATEX 2157 U
Other certificates	Belarus (Gospromnadzor)	Belarus (Gospromnadzor)

# Potentiometers for Panel Mounting

## Series 8455

### Technical Data

#### Electrical data

Rated operational voltage	400 V
Rated operational power	2 W
Characteristics	linear
Resistance tolerance	± 20 %
Resistor material	Carbon film
Resistance values	100 Ω ... 4.7 MΩ
Circuit diagram	

06065E00

#### Ambient conditions

Ambient temperature	see explosion protection data
---------------------	-------------------------------

#### Mechanical data

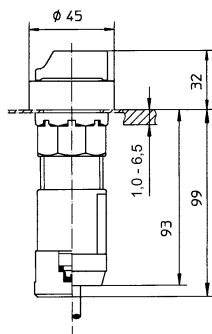
Version	8455/2 with 6 m connecting cable	8455/4 with terminals
Degree of protection	IP66	IP20
Enclosure material	Polyamide	Polyamide
Cable length	3 m, 6 m, further on request	—
Scale	0 ... 6, 0 ... 10, 0 ... 100, further on request	0 ... 6, 0 ... 10, 0 ... 100, further on request
Rotary knob		
Rotation range	270°	270°
Torque	0.7 ... 2 Ncm	0.7 ... 2 Ncm
Stop strength	≥ 100 Ncm	≥ 100 Ncm

#### Assembly / Installation

Version	8455/2 with 6 m connecting cable	8455/4 with terminals
Connection type	Connection lead similar to HO5VV-F, 3 x 0.75 mm <sup>2</sup>	Terminals 1.5 mm <sup>2</sup> finely-stranded

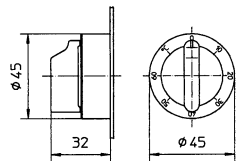
Note Each potentiometer needs a back-up fuse according to its rated current as short circuit protection (max.  $3 \times I_B$  according to IEC/EN 60127-2-1).

#### Dimensional Drawings (All Dimensions in mm) - Subject to Alterations



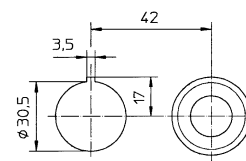
04430E00

8455 Potentiometer



04431E00

Actuator



04488E00

Cut-out for aligning several devices, diameter 38 mm, in a panel

We reserve the right to make alterations to the technical data, dimensions, weights, designs and products available without notice. The illustrations cannot be considered binding.